

**Using the PST-2000
with
Freightliner Trucks**

**Document Number
072-40236-B**

Every effort has been made to keep the information in this document current and accurate as of the date of publication or revision. However, no guarantee is given or implied that the document is error-free or that it is accurate with regard to any specification. AMETEK Dixson reserves the right to modify product designs and specifications without notice.

Free telephone assistance is available Monday through Thursday between 7 a.m. and 5:30 p.m. Mountain Time, and Friday between 7:00 a.m. and noon.

AMETEK Dixson Product Support Department
287 27 Road, Grand Junction, CO 81503
FAX: (970) 245-6267
Phone: (970) 244-1243
Toll-Free: (800) 205-7710

Revision Table

Revision	Date	Description
	12/14/99	Initial release.
-A	01/27/00	Additions and enhancements: Sections 1, 7, 10; Figures 1, 2; Tables 1, 2.
-B	8/15/00	Add fuse and connector information to Figure 1.

Using the PST-2000 with Freightliner Trucks

1 Introduction

This guide explains how to use the PST-2000 (Product Support Tool) to test, troubleshoot, and check the accuracy of AMETEK Dixson gauges installed in Freightliner trucks.

Note - You must read and follow the test procedures in this document to successfully test a gauge. Failure to do so may cause you to reject properly functioning gauges.

2 Care and Cleaning

The PST-2000 is a precision instrument and is designed for trouble-free operation in a normal vehicle repair environment. It will operate between 14 and 122 degrees Fahrenheit and is spill-resistant.

Use only a soft cloth and a mild, non-abrasive soap to clean the PST-2000. Do not use gasoline, alcohol, or solvents because they will damage the instrument and void its warranty. Always return the tool to its carrying case when not in use.

3 Warranty

AMETEK Dixson warrants the PST-2000 to be free from manufacturing and material defects for one year from the date of sale to the end-user. To obtain service, call the AMETEK Dixson Product Support Department and ask for instructions and a Returned Material Authorization (RMA).

4 PST-2000 Kit Contents

Part Name	Part Number
PST-2000, complete kit	00041133
PST-2000, tester only	243-12833
Carrying Case	243-14028
Standard Input Cable, 900/6/7 Panel Speedo/Tach	180-12840
Input Cable, Cigarette Lighter Socket Adapter	180-12848
Input Cable, External Power Supply	180-12847
Optional Input Cable, AC Adapter to 12 VDC	240-12915
Optional Input Cable, AC Adapter to 24 VDC	240-12916
Standard Output Cable, Speedo/Tach/6/7 Panel	180-12841
Standard Output Cable, Temperature, Ammeter	180-12842

Table 1 *PST-2000 Spare Parts*

You may order replacement parts or optional equipment by calling the AMETEK Dixon Sales Department at (970) 244-1241.

Using the PST-2000 with Freightliner Trucks

5 Description

The PST-2000 is designed to help test and troubleshoot the vehicle instrument system by simulating the information normally fed to the gauges from the gauge sensors and sender units. The unit receives power from an input cable that plugs into the speedometer or tachometer harness connector. Optional input cables for bench testing are available that derive their power from a cigarette lighter socket, an external power source, or an AC/DC adapter. The output cables plug into the gauges to be tested.

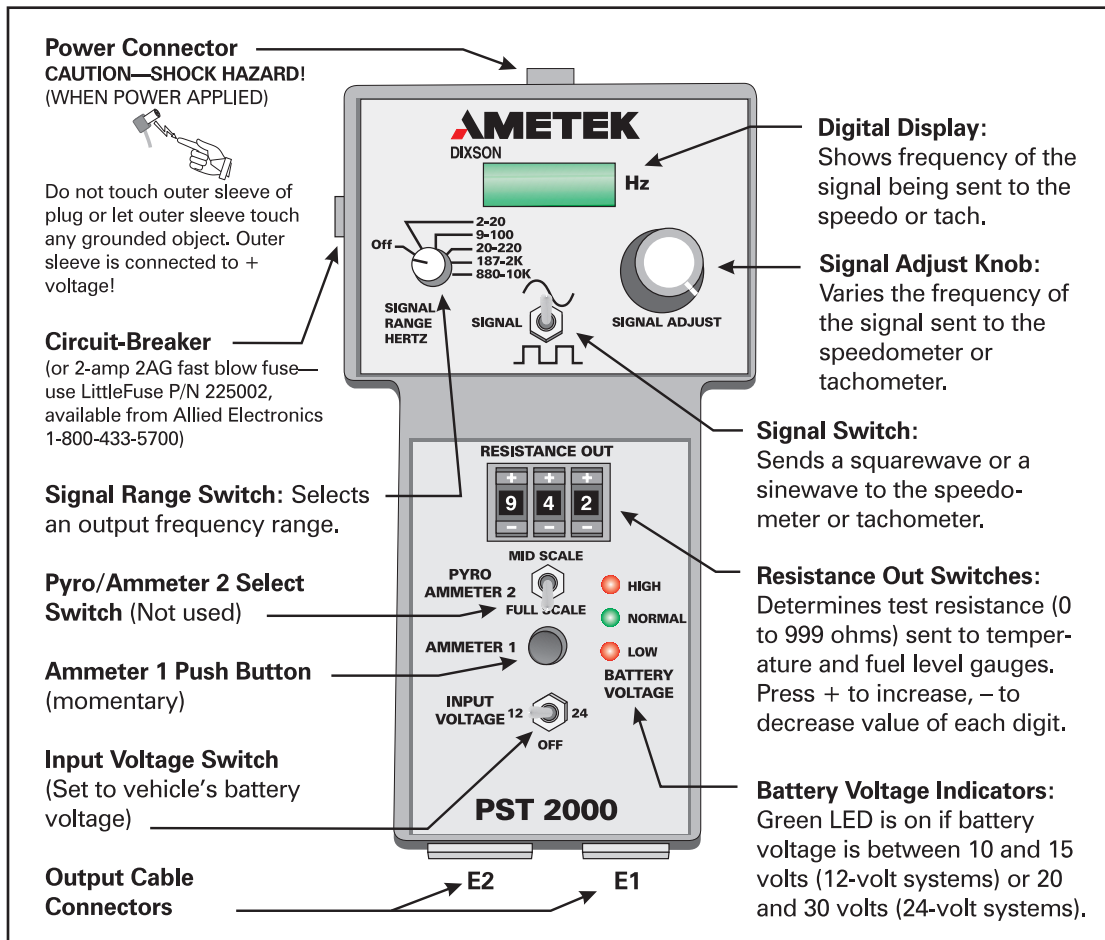


Figure 1 PST-2000 Controls

The tool lets you vary the frequency of pulses sent to the speedometer and tachometer. You vary the output frequency as stated in the procedures and observe the speedometer or tachometer reading.

The tool also contains a variable resistance source to test temperature and fuel level gauges, and current and millivolt signals to test ammeters.

6 Connecting the PST-2000

The PST-2000 comes with a standard input cable that provides power to the tool, and two standard output cables that send signals to the gauges. Optional input and output cables are available. The cables are connected as shown in Figure 2.

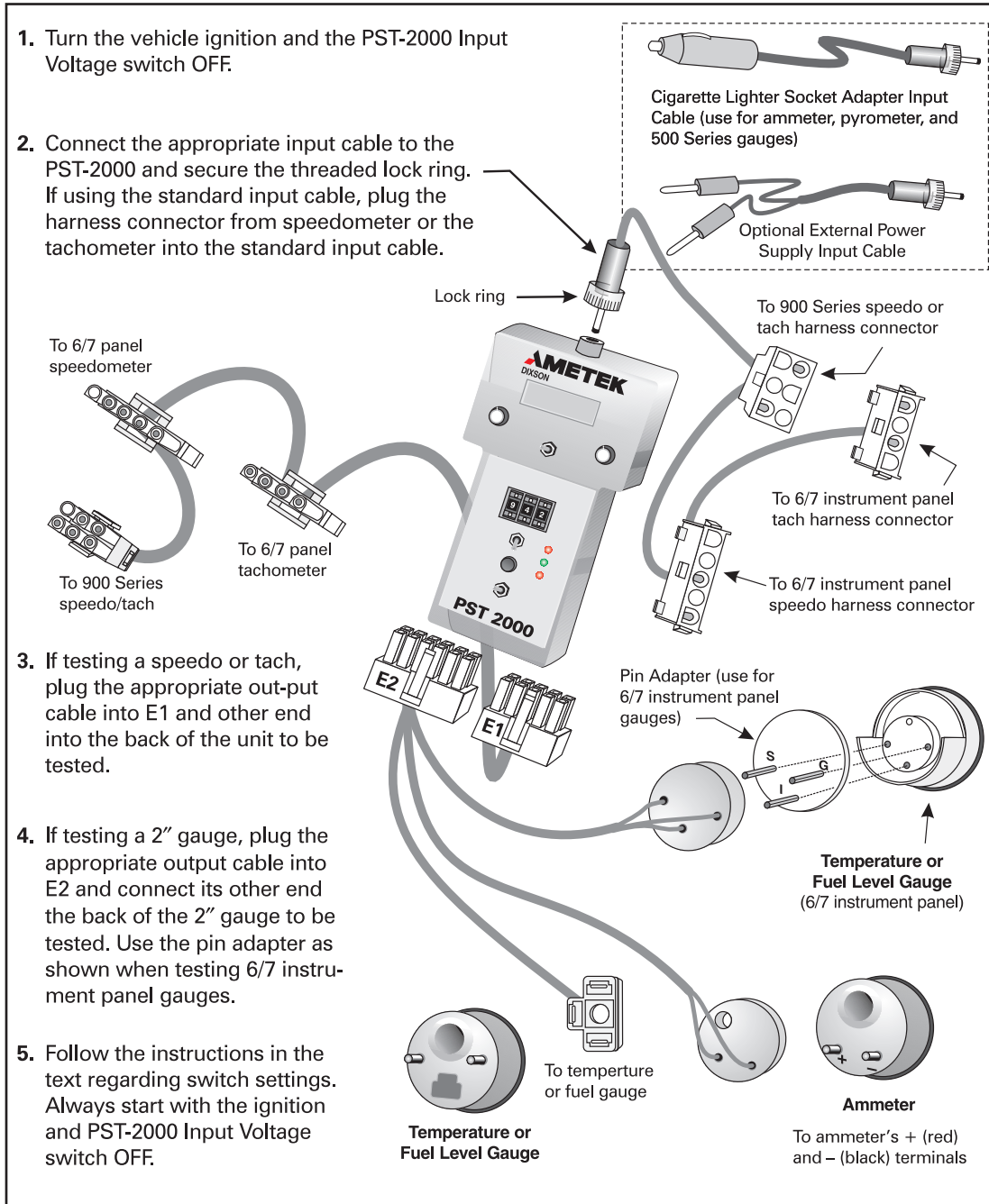


Figure 2 Connecting the PST-2000

Using the PST-2000 with Freightliner Trucks

7 General Test Procedure

Use the following table to find the section for the gauge you wish to test.

If, after testing according to the appropriate procedure, the gauge does not function as described, replace it. If the gauge is functioning properly and is accurate, refer to the appropriate AMETEK Dixson Product Information Note (PIN) for troubleshooting tips.

To test this gauge,	See Section:	PIN:	Gauge Identification
900 Series Speedometer	8	072-40283	Blue plastic housing, or mounted in 6/7 instrument cluster.
900 Series Tachometer	9	072-40284	Blue plastic housing, or mounted in 6/7 instrument cluster.
Fuel and Temperature Gauges	10	072-40289	2-inch metal housing, or mounted in 6/7 instrument cluster.
Ammeter	11	072-40288	2-inch metal housing.

Notes - You can obtain the Accuracy Tables and Product Information Notes referred to in this document by calling our Product Support Department or by downloading them from our website at www.ametekdixson.com.

The PST-2000 cannot test voltmeter gauges. See AMETEK Dixson Product Information Note 072-40287 for information about troubleshooting voltmeter gauges.

Important!

The PST-2000 cannot calibrate gauges. Do not set the tool to a particular frequency or resistance value and then check the pointer position. Instead, use the tool to position the pointer as directed in the procedure, note the value indicated on the tool and verify it falls within the given frequency range listed in the Accuracy Table referenced by that procedure.

When using the tool to position the pointer to full scale, the frequency displayed on the tool corresponds to the values given in the Accuracy Tables called out in these procedures and not with other calibration charts and booklets.

8 900 Series Speedometer

1. Connect the PST-2000 as described in Figure 2.
2. Turn the PST-2000 Input Voltage switch to either 12 volts or 24 volts, whatever is appropriate for your vehicle.
3. Turn the ignition on.
 - a. If the green Battery Voltage LED is on, continue this procedure.
 - b. If one of the red LEDs is on, the Input Voltage switch may not be set to the vehicle's battery voltage, or the battery voltage is too high or too low.
 - c. If no LED is on, the PST-2000 fuse may be blown, the PST-2000 or its input cable may be defective, or you may have a bad power connection. Recheck your connections.

Note - If using an AC/DC adapter input cable, the High LED may light when no gauge is connected to the tester. Disregard this indication.

4. Set the Signal switch down (square wave).
5. Note which switches on the back of the speedometer are closed (on), then verify they are completely closed by using a sharp, pointed object such as a scribe.
6. Write down which switches are closed (on) and locate this switch combination in the "Switches Closed" column of Accuracy Table 072-40319.
7. Check the speedometer's accuracy at 50 mph as follows:
 - a. Read across the row that contains your speedometer's switch combination to the column headed "Hertz @ 50 MPH" to obtain the 50 mph input frequency value.
 - b. Set the Signal Range knob to the correct range based on the 50 mph frequency value you just found. (For most speedometers, this will be 187 to 2k.) This simulates the frequency input from the vehicle's speed sensor.
 - c. Adjust the Signal Adjust knob until the speedometer pointer indicates 50 mph.
 - d. After a 5-second stabilization time, the displayed value should be within the values given in the column headed "Range, 50 MPH" for your switch setting.
8. Check the accuracy at 25 mph as previously described, but use the values in the "Hertz @ 25 MPH" and "Range, 25 MPH" columns, and adjust the Signal Adjust knob to position the pointer at 25.
9. Check the accuracy at 80 (or 85) mph as previously described, but use the values in the "Hertz @ 80 MPH" and "Range, 80 MPH" columns (or "Hertz @ 85 MPH" and "Range, 85 MPH" columns), and adjust the Signal Adjust knob to position the pointer at 80 (or 85).

Using the PST-2000 with Freightliner Trucks

10. Verify the odometer and built-in trip odometer (if applicable) are advancing properly by adjusting the Signal Adjust knob until the pointer reads 60 mph. The odometers should then advance one mile every 59 to 61 seconds.

The following example will help you understand the procedure:

Your speedometer's switches S1, S3, S5, and S8 are on (closed). After looking up that switch combination in the "Switches Closed" column of Accuracy Table 072-40314 and reading across to the "Hertz @ 50 MPH" column, you find that your frequency value is "1456". You would then set the Signal Range knob on the PST-2000 to the 187-2k range and adjust the Signal Adjust knob to position the pointer at 50 mph. If the speedometer is accurate at 50 mph, the PST-2000 will display between 1409 and 1502 as given in the "Range, 50 MPH" column.

9 900 Series Tachometer

1. Connect the PST-2000 as described in Figure 2.
2. Turn the PST-2000 Input Voltage switch to either 12 volts or 24 volts, whatever is appropriate for your vehicle.
3. Turn the ignition on.
 - a. If the green Battery Voltage LED is on, continue this procedure.
 - b. If one of the red LEDs is on, the Input Voltage switch may not be set to the vehicle's battery voltage, or the battery voltage is too high or too low.
 - c. If no LED is on, the PST-2000 fuse may be blown, the PST-2000 or its input cable may be defective, or you may have a bad power connection. Recheck your connections.

Note - If using an AC/DC adapter input cable, the High LED may light when no gauge is connected to the tester. Disregard this indication.

4. Set the Signal switch down (square wave).
5. Note which switches on the back of the tachometer are closed (on), then verify they are completely closed by using a sharp, pointed object such as a scribe.
6. Write down which switches are closed (on) and locate this switch combination in the "Switches Closed" column of Accuracy Table 072-40315.
7. Check the tachometer's accuracy at full scale as follows:
 - a. Read across the row that contains your tachometer's switch combination to the column headed "Full Scale Hertz" to obtain the full scale input frequency value.
 - b. Set the Signal Range knob to the correct range based on the full scale frequency value you just found. (For most tachometers, this will be 880 to 10k.) This simulates the frequency signal from the vehicle's engine speed sensor.

- c. Adjust the Signal Adjust knob to position the pointer to your tachometer's full scale reading (2400 or 3000 rpm). If your full scale reading is 3500, position the pointer to 3000 rpm.
 - d. After a 5-second stabilization time, the displayed value should be within the values given in the column headed "Full Scale Range" for your switch setting.
8. Check the accuracy at half scale (1200 or 1500 rpm) as previously described, but use the values in the "Half Scale Hertz" and "Half Scale Range", and adjust the Signal Knob to position the pointer at 1200 or 1500. If your full scale reading is 3500, position the pointer to 1500 rpm.
 9. Verify the hourmeter (if applicable) is advancing properly. The tenths wheel should advance every 6 seconds while power is applied.

The following example will help you understand the procedure:

Your tachometer's switches S1, S3, and S5 are on (closed). After looking up that switch combination in the "Switches Closed" column of Accuracy Table 072-40315 and reading across to the "Full Scale Hertz" column, you find that your frequency value is "8400". You would then set the Signal Range knob on the PST-2000 to the 880-10k range and adjust the Signal Adjust knob to position the pointer at 3000 rpm. If the tachometer is accurate at full scale, the PST-2000 will display between 8232 and 8568 as given in the Full Scale Range column.

10 Fuel Level and Temperature Gauges

1. Unplug the gauge to be tested (or remove it from the 6/7 instrument panel) and connect the PST-2000 as described in Figure 2.
2. Turn the PST-2000 Input Voltage switch to either 12 volts or 24 volts, whatever is appropriate for your vehicle.
3. Turn the ignition on.
 - a. If the green Battery Voltage LED is on, continue this procedure.
 - b. If one of the red LEDs is on, the Input Voltage switch may not be set to the vehicle's battery voltage, or the battery voltage is too high or too low.
 - c. If no LED is on, the PST-2000 fuse may be blown, the PST-2000 or its input cable may be defective, or you may have a bad power connection. Recheck your connections.

Note - If using an AC/DC adapter input cable, the High LED may light when no gauge is connected to the tester. Disregard this indication.

4. Configure the PST-2000 Resistance Out switches until the gauge pointer aligns with the gauge test point value given in Table 2 for the type of gauge you are testing.
5. **Important! Tap the gauge while adjusting the switches to accurately align the pointer.**

Using the PST-2000 with Freightliner Trucks

6. Compare the value showing on the Resistance Out switches to the values in the Resistance Out Range column in Table 2.
 - a. If the switch value does not fall within the range in the Resistance Out Range column, or if the gauge does not function as described, replace it.
 - b. If the gauge is functioning properly, refer to AMETEK Dixson Product Information Note 072-40286 (Troubleshooting Fuel Gauges) for troubleshooting tips.

Scale Plate Type	Gauge Test Points	Resistance Out Range
100 to 350° F	150° 300°	170 to 186 ohms 34 to 50 ohms
100 to 300° F	200° 250°	103 to 119 ohms 59 to 75 ohms
100 to 260° F	140° 200°	220 to 236 ohms 80 to 96 ohms
100 to 250° F	150° 200°	188 to 204 ohms 79 to 95 ohms
Fuel Level	Full (F) Empty (E)	26 to 40 ohms 220 to 260 ohms

Table 2 Resistance Out Values

The following example will help you understand this procedure:

The scale plate on a suspect temperature gauge reads from 100 to 300 degrees Fahrenheit. You connect the PST-2000 to the gauge and configure the Resistance Out switches to position the pointer to 200 degrees after tapping the gauge. If the gauge is accurate, the value showing on the Resistance Out switches will be between 103 and 119 ohms as shown in Table 2.

11 Ammeter

1. Unplug the gauge to be tested and connect the PST-2000 as described in Figure 2.
2. Turn the PST-2000 Input Voltage switch to either 12 volts or 24 volts, whatever is appropriate for your vehicle.
3. Turn the ignition on.
 - a. If the green Battery Voltage LED is on, continue this procedure.
 - b. If one of the red LEDs is on, the Input Voltage switch may not be set to the vehicle's battery voltage, or the battery voltage is too high or too low.

- c. If no LED is on, the PST-2000 fuse may be blown, the PST-2000 or its input cable may be defective, or you may have a bad power connection. Recheck your connections.

Note - If using an AC/DC adapter input cable, the High LED may light when no gauge is connected to the tester. Disregard this indication.

4. When you press and release the Ammeter 1 button, the ammeter's pointer should go momentarily to full scale (60, 100, or 120 amperes, depending upon the gauge) and then return to 0.

Note - To prevent internal overheating, the Ammeter 1 button will not respond until 6 to 10 seconds have elapsed since the last time it was pressed.

END OF DOCUMENT